

E M I R M E G A Y A C H T

METERS 82
28 VIP GUESTS



INDULGENT ESCAPISM
SHARED EXPERIENCES
ULTIMATE FREEDOM

82.5m Megayacht

Experience the true expression of privacy and freedom aboard our 82.5-meter superyacht, accommodating up to 28 guests with bespoke luxury services.

Crafted with the sole purpose of delivering meaningful moments that evolve into enduring memories on every journey.





**Unleash Your
Adventurous Spirit:**

Exciting Watersports
and Luxury Toys





An extensive range of water toys and activities ensures that there's something for everyone to enjoy, fostering unforgettable moments and strengthening the bonds between family and friends. Whether it's exhilarating water sports, serene relaxation, or exciting explorations, M/Y EMIR's diverse offerings guarantee a bespoke experience for every member of the group, creating cherished memories and shared moments of joy and unique thrills.







Working Out Al Fresco:

A Fusion of Fitness
and Luxury



With its state-of-the-art gym on its bridge deck, M/Y EMIR makes working out al fresco, a great experience. Following the same lavish standards as the cabins, the outdoor gym is the apogee of open-air luxury. Exquisite views, relaxed, pressure-free environment and such close proximity to nature, makes your time here, a spiritualistic retreat.





Pristine and Private:

Soothing Spa Treatments
and Relaxation



Our thoughtfully designed spa room on the main deck offers a healing atmosphere, oozes tranquility and rejuvenation. Set against a backlit onyx wall, a multifunctional treatment and massage bed offers face, body, and massage treatments. The EMIR experience enhances vitality and fosters the rejuvenation of both body and mind, creating the perfect environment for restoring balance and achieving wellness.



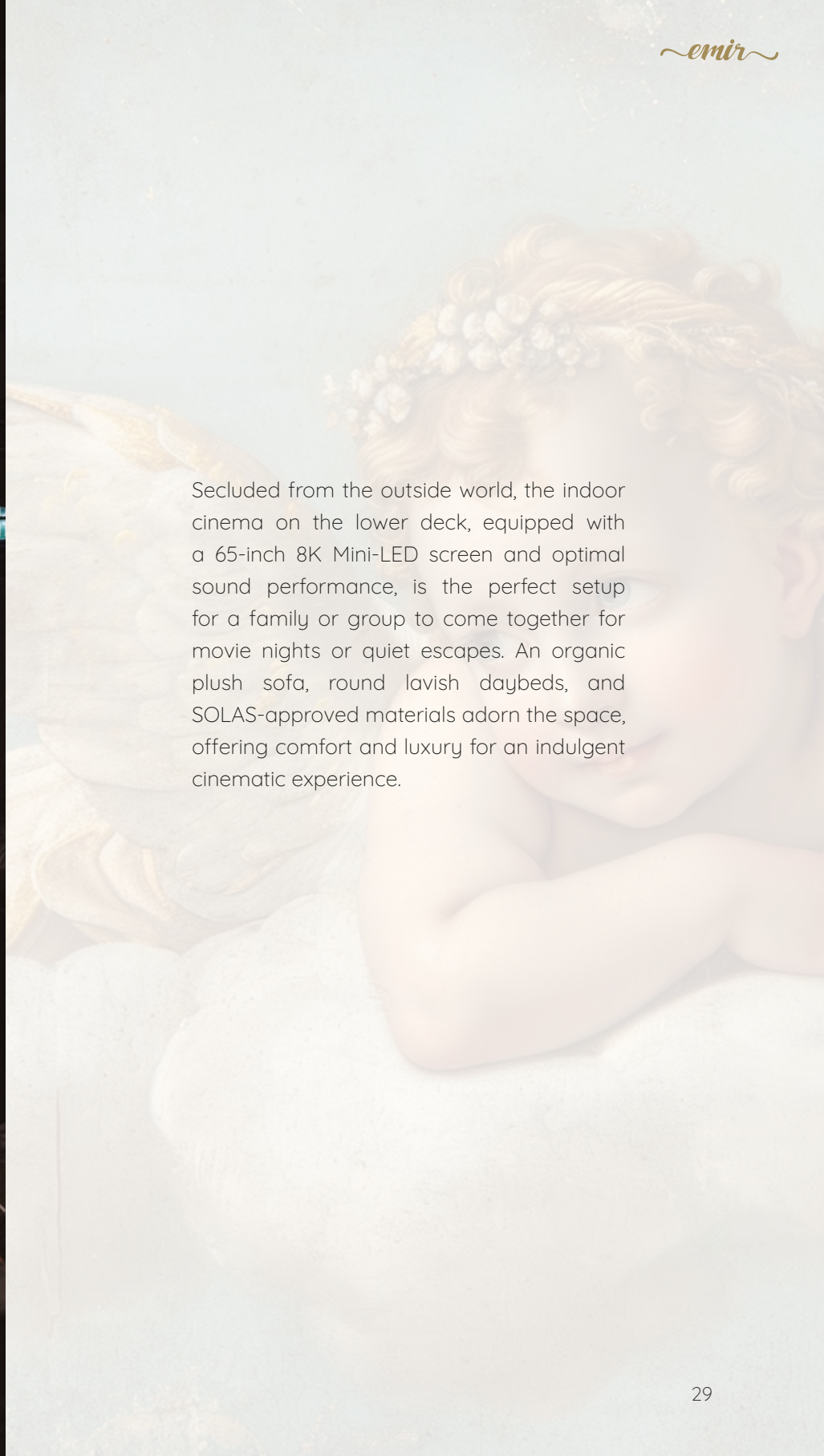
Captivating Cinema
Experience:

Immerse Yourself in
Cinematic Splendor





Secluded from the outside world, the indoor cinema on the lower deck, equipped with a 65-inch 8K Mini-LED screen and optimal sound performance, is the perfect setup for a family or group to come together for movie nights or quiet escapes. An organic plush sofa, round lavish daybeds, and SOLAS-approved materials adorn the space, offering comfort and luxury for an indulgent cinematic experience.





Vistas of Elegance:

Spectacular Views and
Dreamlike Destinations



Welcome breathtaking beauty and tranquility as you create unforgettable memories. Witness stunning sunsets, caressed by the crisp ocean breeze, and embrace the serene ambiance that surrounds you. Experience the sheer freedom to explore the dreamiest and most secluded destinations, where spectacular views unfold before your eyes.





Nights on Emir:

Where Starlit Seas Meet
Celestial Elegance



At night, M/Y Emir transforms into an enchanting oasis at sea. The moonlit waters and starry skies create a backdrop of unparalleled beauty, setting the stage for unforgettable evenings. Whether hosting a formal or informal gathering, a large group, or an intimate celebration, M/Y Emir's elegant and expansive decks offer the perfect setting. Here, freedom and luxury intertwine, allowing guests to connect deeply amidst the tranquility of the ocean. From culinary experiences to exceptional entertainment, every detail is tailored to ensure your night on board is as captivating as the surrounding seascape. It's more than just a yacht experience; it's a nocturnal journey where memories are made and joy is boundless.





EXPLORE THE WORLD OF
LUXURIOUS ELEGANCE –
DISCOVER EXTERIOR SPACES





Sun Deck:

Ultimate Relaxation and
Sun-soaked Pleasure



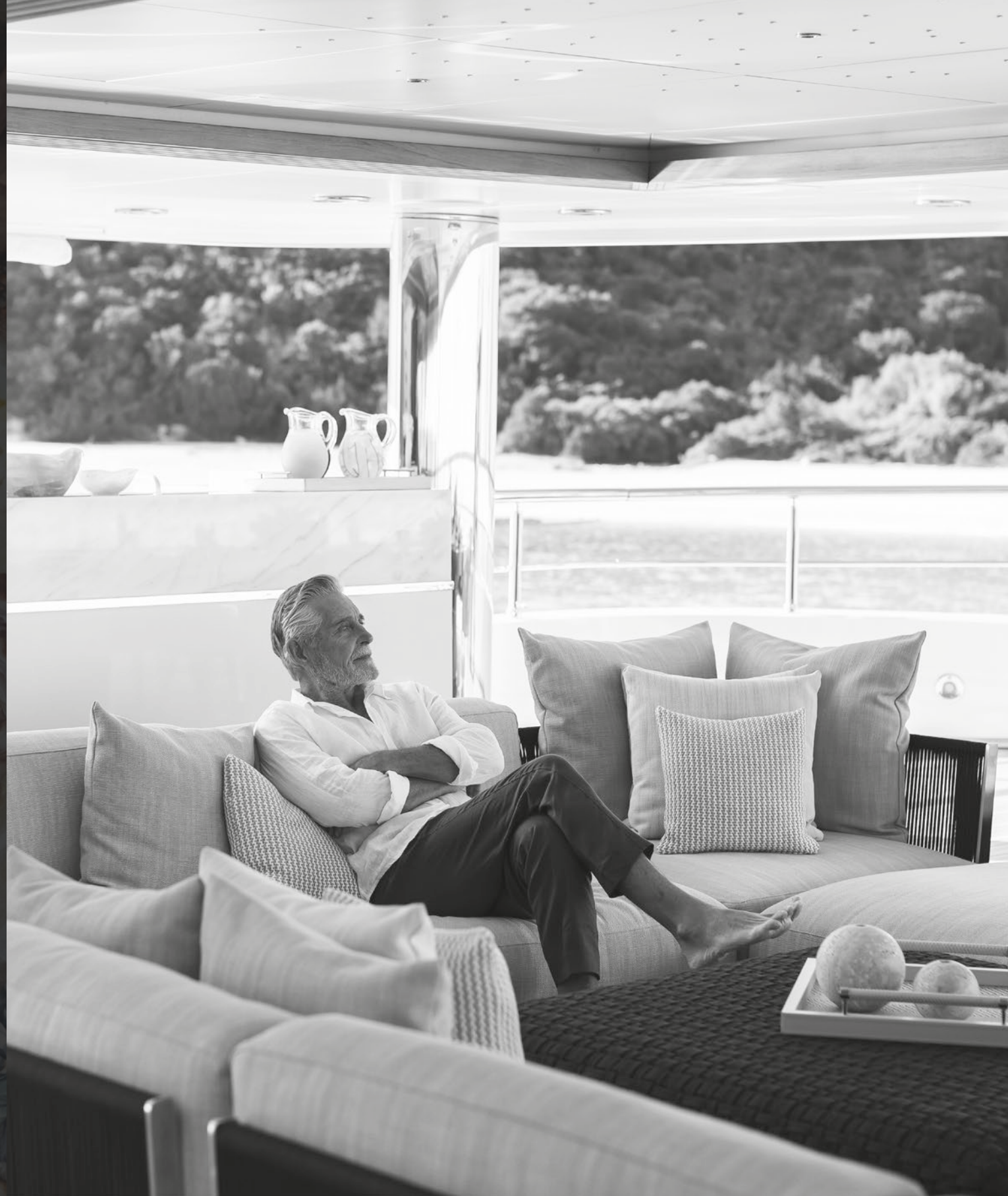
Find solace and rejuvenation by losing yourself in the beauty of the surroundings. Embrace the warmth of the sun in unparalleled comfort on our specially designed sunbeds. Refresh and revitalize with a dip in the pool or jacuzzi. As the sun dives into the sea in a magical sunset and the poolside transforms into a vibrant party zone, sophisticated furnishings and advanced entertainment systems converge, creating the ultimate fusion of emotional luxury and entertainment.





VIP Ai Fresco Lounge
and Dining Area:

Where Moments Unfold



Cherish unique and intimate moments at the private and comfortable outdoor lounge and dining area. A dining table for 10 guests, huge plush sofa for 25 people and 2 sets of lounge chairs and coffee tables creates the ideal space to entertain and host family and friends, amidst captivating surroundings. Relax, reconnect, and create memories that will be treasured for a lifetime.







UNWIND IN OPULENT
COMFORT - DISCOVER
LUXURIOUS INTERIORS

Upper Deck:

Refined Elegance
and Endless Bliss



Savor the tranquility of an afternoon sunset, at the elegant VIP lounge on the upper deck—an embodiment of refined finesse. Unwind in your own private space, stimulate your senses with tantalizing culinary experiences, accompanied by eclectic cocktails, all while delighting in the breathtaking outdoor scenery. With such a variety of entertainment options, you'll be spoilt for choice as to how to spend your evenings.





The Royal Master Suite:

Unprecedented Opulence
and Privacy



Enjoy spectacular views and nestle in utter privacy and comfort at the Royal Master Suite. Full height glass windows, and extended balconies prioritize unobstructed views to priceless surroundings. A large central skylight placed over the king-sized bed allows natural light to shine through during the day and makes sleeping under the stars the perfect way to connect with nature and recharge.





Every detail in the Royal Master suite has been meticulously designed to strike the perfect balance between escapism and luxe living. A his and her's style bathroom adorned with the finest onyx marble, and enhanced by a mirror TV, exclusive plumbing fixtures, a resting room and a central freestanding bathtub, add an extra touch of glamour to this already plush cabin.

Experience the ultimate revitalizing shower ritual. Step into the ensuite's deluxe Sunshower®, and let the soothing warmth of infrared light stimulate blood circulation, and ease muscle tension and pain.



Main Deck Splendor:

Luxury Unveiled



The main deck epitomizes luxury with its plush furnishings, lavish carpets, and rich mahogany paneling. A lounge area with its fold-down windows provides unobstructed access to priceless views, while the stylish indoor dining area has been thoughtfully designed to guarantee an exceptional dining experience. At night, the Royal Emir's sophisticated light plan further enhances the aesthetics of the interior, creating a comfortable and calming environment onboard.

Outdoors, a spacious 12-seater sofa and lounge chairs offer plenty of further relaxation space and panoramic views to the sea. The sophisticated beauty salon equipped with a cutting-edge multifunctional bed offers a range of body, facial and hair treatments taking your relaxation to new heights.





The Executive
Stateroom:
Exquisite Retreat



The Executive Stateroom is pure luxury with chic finishing touches that adorn the space, lavish amenities, and a breathtaking ocean view. Defined by a play of dark and light wood veneers, complemented by precious onyx marbles and chic finishing touches, this space exudes timeless sophistication, offering a spacious, luminous connection to the sea.







VIP Staterooms:

Harmonious Balance
of Luxury & Tranquility



Adjacent to the Royal Master suite, two VIP suites epitomize luxury and comfort on the upper deck. An elegant bedroom, which includes, a walk-in closet, and a lavish bathroom, create a serene, home-like atmosphere. Using warm, neutral tones, these suites capture a harmonious balance of luxury and tranquility.





Guest Cabins:

Personal Comfort,
Familiar Elegance



The main deck hosts five double, four twin, and one triple cabin, all connected by a luxuriously detailed corridor. Each room showcases an ensuite bathroom with a timeless design, soft wall surfaces, and timber accents, ensuring an inviting and hospitable atmosphere of familiar elegance.





SPECIFICATIONS –
MASTERPIECE OF DESIGN
AND ENGINEERING



BUILDER
Golden Yachts

YEAR REBUILT
2022

FLAG
Greek

CHARTER
Yes

HOME PORT
Piraeus, Greece

CRUISING AREA
Globally

CLASSIFICATION
Bureau Veritas

DESIGNER
Georgia Ntota &
Associates Design
Studio Vafiadis

CONSTRUCTION
Steel Hull / Steel
Superstructure
(Aluminum / Bridge &
Sundeck)

LENGTH
82.5m / 270.66ft

BEAM
11.60m / 38.05ft

DRAFT
4.40m / 14.43ft

GROSS TONNAGE
1809 grt

DISPLACEMENT
1975 tons

MAIN ENGINES
2 x Yanmar 2000 BHP
@ 650 RPM

GENERATORS
3 X Volvo Penta
D16 AMG1800 RPM

STABILIZERS
Rolls Royce zero speed
(retractable)

CRUISING SPEED
12.5 knots

MAX. SPEED
14.5 knots

WATERMAKER
Sea-Recovery 2 x 5200 l/day

HVAC
1,800,000 BTU with local fan
coils in all compartments &
preconditioned air supply

WATER CAPACITY
60,000 ltrs

GUESTS
28

CABINS
14

CABIN CONFIGURATION
1 Royal Master Suite
1 Executive Stateroom
2 Double VIP Suites
5 Double Guest Cabins
5 Twin Guest Cabins

CREW
28





COMMUNICATION

Starlink wifi router, high speed wireless internet (Cisco access points) through VSAT broadband service with VOIP capability, Inmarsat C, Inmarsat Fleet Broadband FAX, Panasonic Telecommunication Center, VHF/DSC, GMDSS, Navtex Receiver, MF/HF Radio Telephone.

NAVIGATION

Integrated Navigation System SAM Electronics, SAM S-Band & X-Band Radar, SAAB AIS Transponder, SAM Dual ECDIS Electronic Charts System, Flir Night Vision. RAYTHEON ANSCHUETZ Gyro compass and Autopilot.

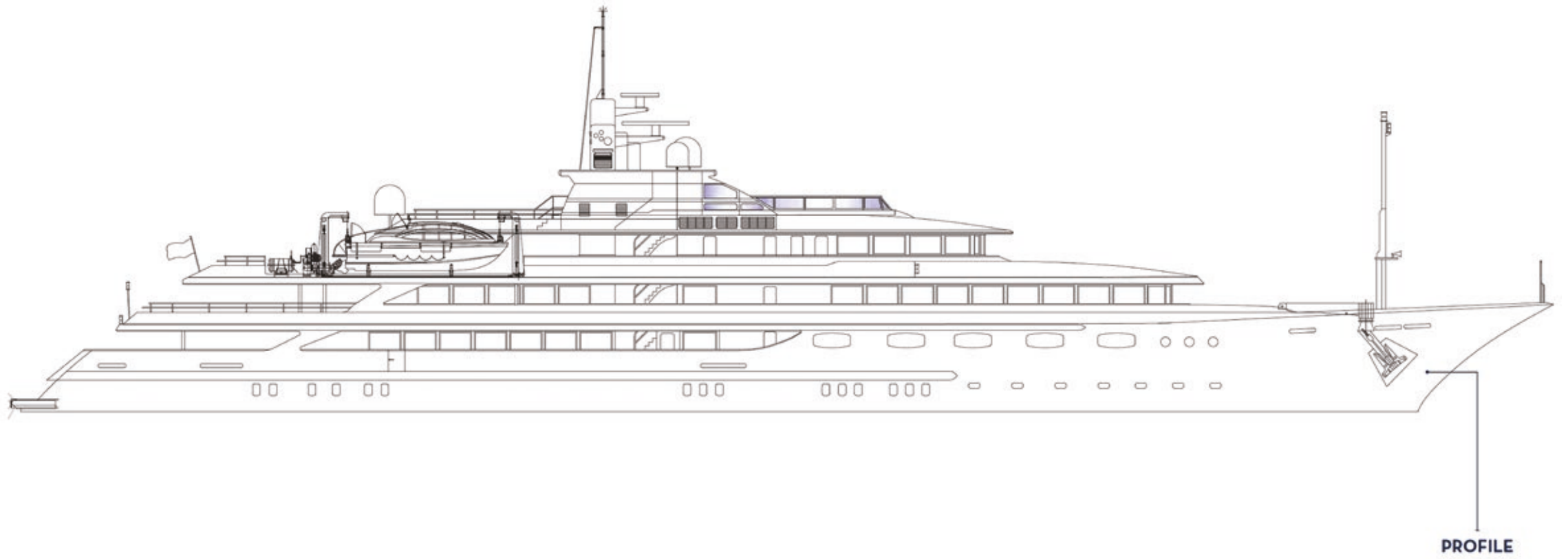
SECURITY

Central CCTV Bosch System with 14x Surveillance Cameras including 3x Military Spec 3600 Rotating Cameras & 4 x Monitoring stations.

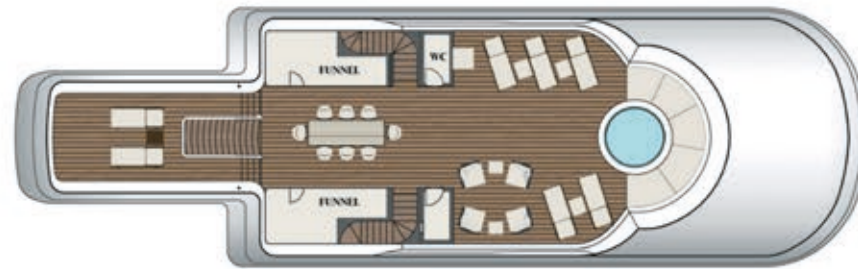
ADVANCED MEDICAL FACILITIES

Our onboard medical room, fully equipped with the necessary medical supplies and equipment like defibrillators and an ECG machine, ensures immediate care. Telemedicine services offer real-time remote medical consultations.

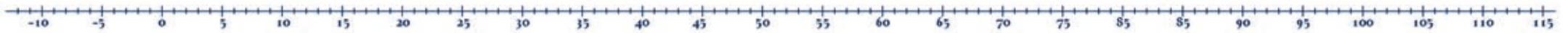
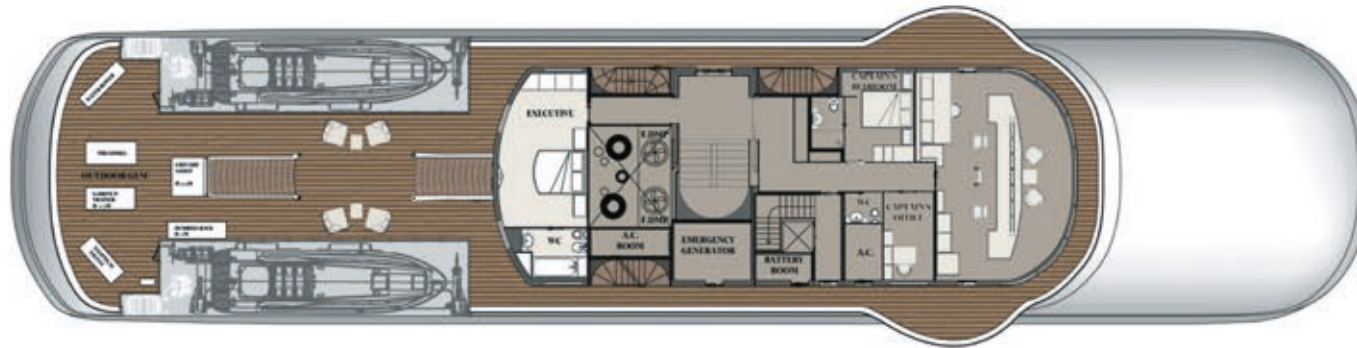




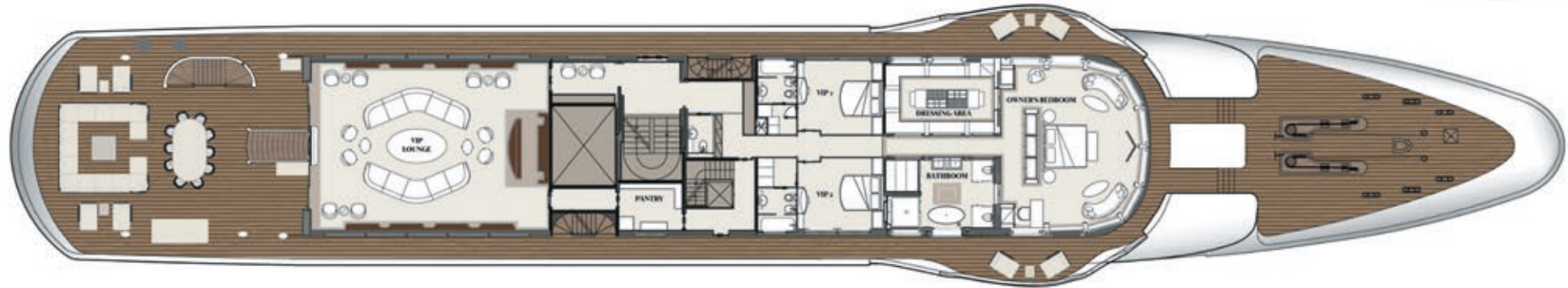
SUN DECK



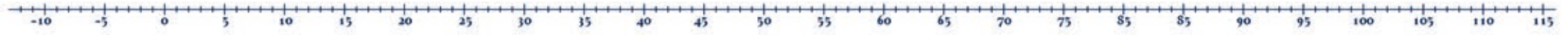
BRIDGE DECK



UPPER DECK



MAIN DECK



LOWER DECK



emir

www.emiryacht.com